

Insulated Masonry Veneer Systems

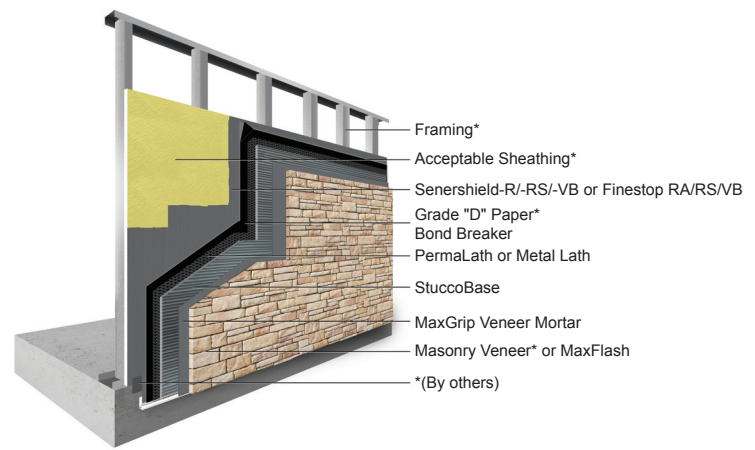
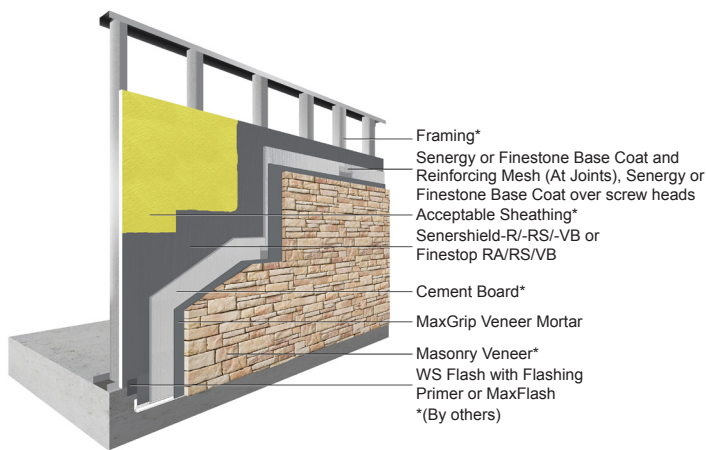
Fully integrated, code-compliant wall systems with unlimited aesthetic options



Non-Insulated Masonry Veneer Systems

The power of choice at your fingertips

Select from our comprehensive portfolio of Masonry Veneer Systems to meet your building enclosure needs. MaxGrip Veneer Mortar is compatible with a variety of substrates, including cement board, stucco, concrete, CMU, and over Senergy and Finestone air/water resistive barriers.

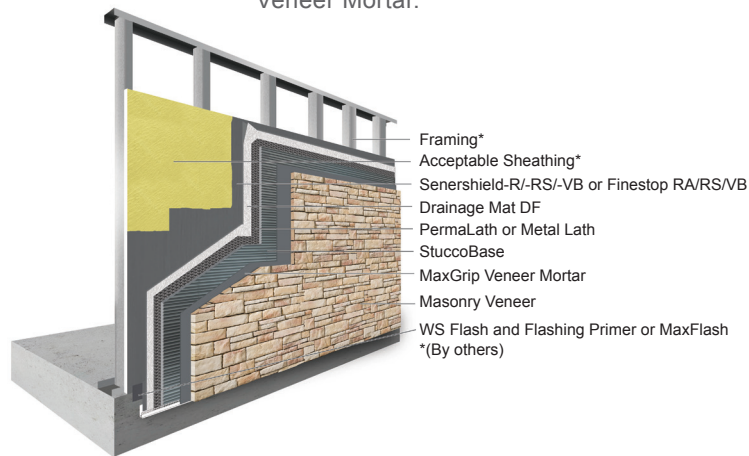


Cement Board Stucco/Finescreen 1000 with MaxGrip Veneer Mortar

A highly impact and puncture resistant, water-drainage wall system incorporating a cement board core, reinforced base coat and MaxGrip Veneer Mortar.

Stucco Plus with MaxGrip Veneer Mortar

An impact and puncture resistant, cement plaster stucco system, which incorporates a Senershield-R/-RS/-VB or Finestop RA/RS/VB air and water-resistive barrier to provide a premium level of protection to the sheathing and cavity against moisture and air intrusion and features MaxGrip Veneer Mortar.



Stucco Ultra with MaxGrip Veneer Mortar

An impact and puncture resistant, cement plaster stucco system with enhanced water management. It incorporates a Senershield-R/-RS/-VB or Finestop RA/RS/VB air and water-resistive barrier to provide a premium level of protection to the sheathing and cavity against moisture and air intrusion and MaxGrip Veneer Mortar.

Insulated Masonry Veneer Systems

Superior performance with unlimited aesthetic possibilities

As design trends evolve toward multi-cladding with stone and brick; architects, designers, building owners and other construction professionals are seeking alternatives that can help achieve the required performance and multi-cladding aesthetic. Master Builders Solutions designed the Insulated Masonry Veneer System to specifically meet the challenges of multi-cladding construction, creating the look and feel your clients want, with code compliance and building performance you need, at a cost that facilitates project success.



Pensacola, Florida



Pensacola, Florida

Build with confidence

Fully tested and evaluated to ensure components work as a code-compliant system, the Insulated Masonry Veneer System is listed by ICC Evaluation Service in ESR-1878 and ESR-2186 evaluation report and complies with NFPA 285 standard.

Reduced complexity

Simplified building materials selection process. The Insulated Masonry Veneer System seamlessly incorporates all the necessary continuous control layers to manage heat, moisture and air flow, covered under a single source manufacturer warranty.

Stone aesthetic options

When you are seeking a high-quality finish to the Insulated Masonry Veneer System, Westlake Royal Stone Solutions, manufacturers of North America's most recognized brands of manufactured stone veneer, Cultured Stone® and Eldorado Stone® delivers stone veneer that is virtually indistinguishable from natural stone and other materials.

Energy efficiency

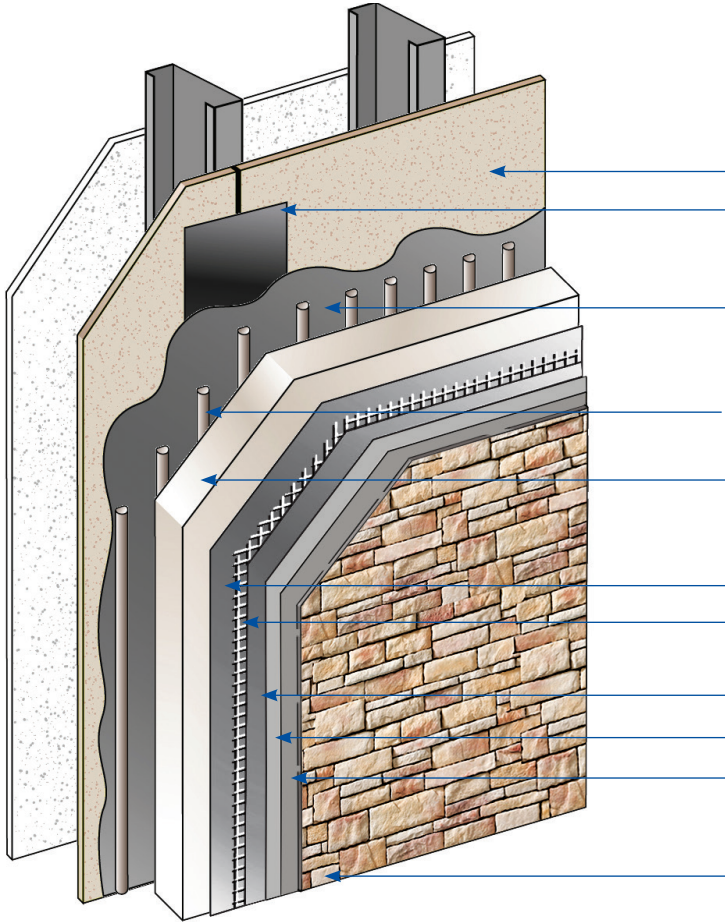
Achieve the desired masonry veneer aesthetic without compromising the continuous exterior insulation or penetrating the air and water-resistive barrier, which reduces energy efficiency by causing thermal bridging.

Jobsite productivity

Take the headache out of coordinating the sequence of trades and products from multiple manufacturers. The Insulated Masonry Veneer System can be installed by a single applicator, helping you complete the job on time and within budget.

Insulated Masonry Veneer Systems

Innovative, high-performance wall systems



A fully integrated wall system with continuous insulation, air/water-resistive barrier and drainage, featuring MaxGrip Veneer Mortar.

1. Acceptable substrate[†]
2. Approved Joint Reinforcement:
MaxFlash or Sheathing Fabric embedded in Senershield-R/-RS/-VB or Finestop RA/RS/VB
3. Senershield-R/-RS/-VB or Finestop RA/RS/VB
Fluid-applied air and water-resistive barrier provides effective air and moisture protection
4. Senergy or Finestone Adhesive
Drainage plane for effective moisture control
5. Approved EPS Insulation Board[‡]
Continuous exterior insulation delivers optimal energy efficiency
6. Senergy or Finestone Base Coat
7. Intermediate 12 Reinforcing Mesh
Structural wall support impact resistance
8. Senergy or Finestone Base Coat
9. Skim Coat of MaxGrip Veneer Mortar
10. MaxGrip Veneer Mortar
High strength, setting bed mortar, used to adhere a variety of masonry veneers
11. Adhered Veneer[‡]
Compatible with Cultured Stone[®] and Eldorado Stone[®] by Westlake Royal Stone Solutions

Code Compliance	
Document	Description
ICC ESR-1878 / ESR-2186	Complies with 2018 and 2015 IBC and IRC
ASTM E2568 / AC 235	Complies with requirements
ASTM E119	Does not detract from fire rating of base wall
NFPA 285 and 268	Acceptable on non-combustible construction
ICC-ESR 2986 (Senershield-R/-RS / Finestop RA/RS)	Air/water-resistive barrier*
Air Barrier Association of America recognized (Senershield / Finestop)	Can be used on projects where ABAA recognized air barriers are specified

*Senershield and Finestop can be used behind all claddings where more than one wall system is specified, creating one continuous AWRB system. This is appropriate whenever Senergy Channeled Adhesive CI Design or Finestone Pebbletex CI-DCA with MaxGrip Veneer Mortar is used with other cladding types on a multi-clad building.

[†]Acceptable substrates:

PermaBase[®] Cement Board and other cement boards conforming with ASTM C1325 (Type A - exterior); poured concrete/unit masonry; ASTM C1177 type sheathings, including Weather Defense[™] Platinum sheathing, GreenGlass[®] sheathing, eXPTM sheathing, GlasRoc[®] sheathing, Securock[™] glass-mat sheathing, and DensGlass[®] exterior sheathing; DensElement (sheathing only), gypsum sheathing (ASTM C79/C1396); Exposure I or exterior plywood (Grade C/D or better); or Exposure I OSB; Huber Zip (sheathing only).

[‡]By other manufacturer

MaxGrip Veneer Mortar

Maximum strength and adhesion

High-strength and specially formulated, MaxGrip Veneer Mortar is a setting bed mortar used to adhere up to 15 PSF of natural and manufactured stone*, ceramic tile†, and thin brick veneer‡ to a broad range of substrates. No mechanical fasteners required.

- Freeze-thaw stable bond showing resistance to deterioration after repeated temperature cycling per ASTM C-666 (modified using full IVS composite in place of concrete beam)
- Maximum adhesion and bond strength to substrate and masonry veneer
- Complies with ANSI 118.4 and 118.15, the American National Standard Specifications for Modified Dry-Set Cement Mortar
- Fully tested per ASTM C109, Standard Test Method for Compressive Strength of Hydraulic Cement Mortars



For complete application recommendations on the use of MaxGrip Veneer Mortar, please review the Product Bulletin.
*Manufactured stone must comply with applicable requirements of ICC-ES Acceptance Criteria AC51 or ASTM C1670.

†Tile shall comply with applicable requirements of the Tile Council of North America and/or ANSI A137.1.

‡Thin brick veneer shall comply with applicable requirements of ASTM C 1088 or per the Brick Industry Association.



Unparalleled support for exceptional outcomes

Building Information Modeling (BIM)

Develop a pre-construction view of your project and reduce waste and rework. Easily view and download content from BIMsmith and BIMobject for free, including Revit files, product specifications, details, videos and other technical data

Dedicated to your success

Our dedicated team of building enclosure professionals are with you every step of the way, from field representatives to technical support and application specialists, our team is here to help you achieve the best outcomes.

Contact Master Builders Solutions to learn more about continuously insulated wall systems and finish options or visit www.master-builders-solutions.com/en-us

Customer Service

888-338-7170

Contact Westlake Royal Stone Solutions to learn more about North America's most recognized brands of manufactured stone veneer, Cultured Stone® and Eldorado Stone®, or visit elevatewithstone.com

Customer Service

800-925-1491

